

Sion Edwards

BSc(Hons), BArch(Dist), DipLA(Dist), RIBA, MHKIUD
Director – Urbis Limited



Sion Edwards is a landscape designer, urban designer and architect with extensive urban design, landscape design and planning experience in Hong Kong and the Region. He practiced as a Registered Architect in Cardiff and London (UK), before taking up a Leverhulme Trust Scholarship to study Landscape Architecture in New Zealand. Over the last 27 years with Urbis Limited, he has been involved in a wide variety of projects including landscape design, urban design, architectural design, tourism development, planning, master-planning, urban renewal, heritage projects and many transport-related development projects.

Sion has a particular interest in streetscape upgrading projects; city and district image enhancement projects; urban regeneration and landscape design projects which require a contemporary design response; and landscape design solutions that are fully integrated with the architectural character of new urban developments.

Sion's architectural design background and expertise in Landscape Design and Urban Design has fostered a particular interest in Integrated Multi-disciplinary Design, Environmentally Responsible and Sustainable Design and Place-making, and this is reflected in Sion's portfolio of completed landscape design projects.

Sion's signature projects in Hong Kong include:

- the landmark International Finance Centre, IFC Mall, Four Seasons Hotel and Hong Kong Station Developments on reclaimed land forming the new Hong Kong Waterfront. Involvement commenced in the early 90s with the development, for Government, of Reclamation Development Strategies for the planned Central and Wan Chai Reclamation District, and subsequently Recommended Outline Development Plans; Urban Design Strategies and Guidelines for Development; and detailed Urban Design Brief for these developments; and subsequently, as a result of winning a Conceptual Landscape Design Competition, the design and implementation of all associated streetscapes, public open spaces and roofscapes;
- complex podium landscapes at Phase II of Science Park
- landscape designs for the Construction Industry Council's Zero Carbon Building – Hong Kong's first zero-carbon project;
- Streetscape Enhancement Projects in Core Central, Hong Kong, for Hongkong Land
- Landscapes at the recently completed 'PARC Central' Project in Guangzhou - an iconic low rise destination retail and entertainment development, entirely enveloped by seamless multi-level landscapes, and integrating streets, avenues, recreation spaces, squares and piazzas
- A Public Heritage Plaza at the HSBC HQ building, Central

Hong Kong Projects on which Sion is currently working include landscape designs for a Waterpark at Ocean Park; landscape designs for the conservation-oriented re-purposing of the historic West Wing Government Offices and associated Open Spaces, Government Hill, Central; and Technical Support on Landscape to Home Affairs Bureau in their tendering of Kai Tak Sports Park, South-east Kowloon.

PRC Projects on which Sion is currently working are located in Beijing, Chengdu, Guangzhou and Xuzhou.

Many of the projects for which Sion has been directly responsible have received a wide range of Awards from, inter alia, the Hong Kong Institute of Planners, the Hong Kong Institute of Landscape Architects; and the Hong Kong Institute of Urban Design; as well as from Industry Award Schemes such as the Quality Building Awards and Green Building Awards.

EDUCATION / PROFESSIONAL QUALIFICATIONS

BSc First Class Honours in Architectural Studies, University of Wales
B.Arch in Architectural Studies with Distinction, University of Wales

1981
1982

Post Graduate Diploma with Distinction in Landscape Architecture, Lincoln College, Canterbury, New Zealand (Leverhulme Trust Scholar)	1989
Member of the Royal Institute of British Architects (RIBA)	1985
Registered architect with The Architects Registration Council of the UK (subsequently The Architects Registration Board)	1985
Graduate (now Licentiate) member of the Landscape Institute, UK	1991
Associate Member of Hong Kong Institute of Landscape Architects	1991
Member of the Hong Kong Institute of Urban Design	2010

EMPLOYMENT

1990 – Present	URBIS LIMITED , Hong Kong (Director since 1998)
1981 - 1988	ALEX GORDON PARTNERSHIP – Architects and Masterplanners

SELECTED ACTIVE PROJECTS



**HONG KONG DISNEYLAND RESORT PROJECT - PACKAGE A – AREA DEVELOPMENT
LANDSCAPE ARCHITECTURAL SERVICES**

Client : Walt Disney Imagineering Asia Limited

Full landscape design services for the redevelopment of the Central Castle Hub in Hong Kong Disneyland. Works include modifications to existing landscapes to create a new access to the Castle; an amphitheatre from which to view themed shows/performances in front of the Castle; and inputs to a major enlargement of the Castle. The scope of services includes tree surveys and transplantation, adjustments to existing water features, the addition of new water features, hard and soft landscape designs, and inspections at implementation.



LANDSCAPE TECHNICAL SUPPORT SERVICES FOR THE DEVELOPMENT OF THE KAI TAK MULTI-PURPOSE SPORTS COMPLEX – ‘Kai Tak Sports Park’

Client: Home Affairs Bureau, HKSAR Government

Provision of reference design services for the proposed Kai Tak Multi-Purpose Sports Complex. Tasks included the preparation of a master plan for the complex and the provision of design advice on turf surfaces and hard and soft landscape treatments. The assignment also requires the preparation of tender documentation and technical inputs to the project through the contract award and implementation stages of the project.



CE30/2008(CE) KAI TAK DEVELOPMENT, KOWLOON

Client: Civil Engineering and Development Department, HKSAR Government

Major urban development on the site of Hong Kong's former Kai Tak international airport. Services include review and revision of the town planning strategy for the whole development; the development of an urban design strategy for, and revised RODP of the Runway Precinct; landscape planning review of Kai Tak River; assisting public consultation; and full landscape design services for numerous works contracts covering major infrastructure works including roads, drainage works, utility works and an Environmentally Friendly Transportation System. Services also include tree surveys, tree removal applications and LVIA's for various designated projects. The proposed infrastructure works are intended to enable the construction of public and private sector developments with completion of development by 2021.

Services include the development of Landscape Concepts, Reference Design and Tender Documentation for the tendering of roadworks, an elevated open space spine/noise barrier, and associated open spaces and streetscapes in the Runway District.



THE HONG KONG JOCKEY CLUB EXTENDED PHASE 1 OF PROPOSED THOROUGHBRED TRAINING CENTRE AT CONGHUA, GUANGDONG PROVINCE, PRC

Client: The Hong Kong Jockey Club

Landscape Masterplanning & Landscape Design Project. Services include Conceptual and Preliminary Design followed by Workshops with the Local Design Institute responsible for developing Preliminary Designs into Construction Drawings for Implementation; Nursery Inspections of Planting Stock; and ad-hoc Implementation Inspections. Preliminary Designs will be prepared for the Main Entrance Approaches, Entrance Gates and Coach Parking Areas; the Main Boulevard between the Entrance Gate and the Owners' Building, and between the Entrance Gate and Site 1 - Additional Area, which will include Parkland, Public Facilities, Public and VIP Parking, Coach Parking, Visitors Centre, Parade Ring, Public Forecourt, Grandstand and Marquee Area for Marquee Racing-Events, and Track Edge Landscapes. Preliminary Designs will also be provided for, EL-1, Building B, Staff Quarters & Amenities Block.



THE REDEVELOPMENT OF TAI SHUE WAN AT OCEAN PARK, HONG KONG

Client: Ocean Park, Hong Kong

Landscape Designs for the redevelopment of an existing area of the Park as a themed Waterpark – comprising up to 25 planned attractions, including up to 13 water slides. The new Waterpark will be designed for use by up to 15,000 visitors, daily, and is targeted at both local visitors and tourists. The Landscape Consultancy Services comprise full hard and soft landscape design services, and both Tree Surveys and Tree Removal Applications associated the felling/transplanting of a significant number of trees in a heavily wooded and steeply sloping site.



RENOVATION WORKS FOR THE WEST WING OF THE FORMER CENTRAL GOVERNMENT OFFICES FOR OFFICE USE BY THE DEPARTMENT OF JUSTICE AND LAW-RELATED ORGANIZATIONS

Client: Department of Justice (of the HKSAR)

The project involves the conservation and re-purposing of a historic Government Building at the heart of a precinct of historic buildings comprising St John’s Cathedral, the Former French Mission Building, Battery Path and the recently conserved East Wing Government Offices. Services comprise the development of a Landscape Masterplan; Hard and Soft Landscape Concepts (to Preliminary Design); Soft Landscape Detailed Design and supervision in implementation; protection measures for, and monitoring of existing trees (including a number of Old and Valuable Trees); and the retention, protection and enhancement of the site’s heritage features. Designs include the visual enhancement of existing engineered slopes and retaining structures; the design of public open spaces, green roofs and street entrances in a manner which is appropriate for the historic building; and the enhancement of visual and physical access to the precinct by the Public.



CHENGDU YU FENG NO.9 PROJECT, CHENG DU, PRC

Client: The KWG Property Group

Full landscape design services for all landscape areas in a multi-level retail complex integrating hotel, office, and residential developments. Primary landscape design areas at ground level include a Fountain Plaza (designed with WET Design); Forecourts and Entrance-ways; multi-level Set-down and Pick-up areas; Sunken Plazas; Entertainment Street; W Hotel Forecourt and Residents’ Garden; Streetscapes; and a self-contained Dog-park. Podium Terrace Levels integrate Creative-play Areas; Entertainment Areas; AI-fresco Dining Areas; a Bookstore Garden; a Romantic Garden; Exhibition Areas; and both Green Roofs and Green Walls. Each of these spaces has been designed to have complimentary themes but to integrate distinctive landscape and landscape-art features and signage.



CHENGDU YU FENG, NO. 10 COMMERCIAL PROJECT, JIAO ZI AVENUE, HI-TECH ZONE, CHENGDU, PRC

Client: The KWG Property Group

Full landscape design services for all landscape areas in a multi-level retail complex integrating hotel, office, and residential developments. Primary landscape design areas at ground level include an Event Street and open-air Shopping Street; Hotel Forecourts; Entrance-ways; Set-down and Pick-up areas; Streetscapes; and modifications to a wide street-side greenbelt area integrating mature vegetation, which will be modified to include woodland walks linking ‘islands’ of small passive and active recreation areas play sculptures and art installations.



SITE IX-04 & 05, TONGZHOU DISTRICT, BEIJING, PRC

Client: The KWG Property Group

Full landscape design services for all landscape areas in a multi-level retail complex integrating hotel, office, and residential developments. Primary landscape design areas at ground level include Plazas; Forecourts and Entrance-ways; multi-level Set-down and Pick-up areas; Sunken Plazas; Creative-play Areas; and Streetscapes; Podium Terrace Levels integrate AI-fresco Dining Areas; Gardens; and passive recreation rooftop terraces. Landscape design strategies include the placement of, and concepts for large sculpture installations and interactive water features. The predominant theme is that of a central garden corridor along which landscape features visually ‘float’.



M-CUBE DEVELOPMENT, CHONGWENMEN, BEIJING, PRC

Client: : The KWG Property Group

Full landscape design services for a signature retail building designed by internationally acclaimed Dutch architects MVRDV, located close to Chongwenmen Gate, Central Beijing. The multi-level retail building takes the form of a sculpted cube, and cubic forms are referenced in the design of all custom-designed landscape design components and sculptural installations, including seating, interactive creative play areas, water features, signature street lighting, screens and interactive sculpture. Primary landscape design areas comprise forecourts, streetscapes and roofscapes.



CHENGDU SKYVILLE – PLOT 3, CHENGDU, PRC

Client: KWG Property Group

Full service landscape design for mixed use commercial, retail and residential development. Landscape designs take the traditional and contemporary culture of Chengdu as a starting point for design development. This theme and local patterns of open space use inform the character of hard landscapes, interactive sculpture, interactive water features, and interactive creative play features. Landscape design areas include Plazas; Streetscapes; Set-down/pick-up Areas; Entrances; Gateways and Totems; and Roofscapes. A key aim of the project was to provide a landscape design thematically related to the development of the adjacent lot (Plot 4), but with distinctively contrasting features.



CHENGDU SKYVILLE – PLOT 4, CHENGDU, PRC

Client: Chengdu Hong Yu Properties Development Co. Ltd (Hongkong Land/KWG Property Group JV)
 Full service landscape design for mixed use commercial, retail and residential development. The project includes a Cultural Centre, and landscape designs take the traditional and contemporary culture of Chengdu as a starting point for design development. This theme and local patterns of open space use inform the character of hard landscapes, interactive sculpture and water features. Landscape design areas include Plazas; Streetscapes; Set-down/pick-up Areas; Entrances; Gateways and Totems; Accessible Roofscapes; and garden spaces on residential Refuge Floors. A key aim of the project was to provide a landscape design thematically related to the development of the adjacent lot (Plot 3), but with distinctively contrasting features.



NANJING SHIMAO G-11 DEVELOPMENT, NANJING, JIANGSU, PRC

Client: Shimao Group
 Full landscape design services for a complex mixed-use retail, commercial and hotel development. A contemporary landscape design based on traditional local cultural themes extends over 9 levels, and includes a rooftop amphitheatre, podium-level retail streets, al-fresco dining areas and creative play areas; basement courtyards; and ground level Retail, Office and Hotel Plazas and streetscapes. The Assignment also included the development of landscape integration concepts with adjoining residential development sites, and Government canal-side open spaces. A key aim of the project is to provide a new shopping and leisure experience reflective of emerging trends in major cities within the Region, including Bangkok, Singapore, Tokyo and Osaka.



SITE 2012-G-62, WANHUI, SUZHOU, PRC

Client: KWG Property Group
 Full Landscape Design Services for completed, but not fitted out canal-side Retail, Hotel and Office Development, including designs for the adjoining Government-owned greenbelt area. Landscape designs are provided for Forecourts, Driveways, Retail Plaza, Government greenbelt, water features, artworks and podium roof garden.

SELECTED COMPLETED PROJECTS: HONG KONG, THE PRC AND OVERSEAS



DESIGN AND CONSTRUCTION OF TRADE AND INDUSTRY TOWER IN KAI TAK DEVELOPMENT AREA, HONG KONG

Client: Architectural Services Department, HKSAR Government
 The new complex is to house government offices and a community centre. Urbis concept of a "green ribbon" enveloping the building, enhancing the architectural articulation of the building, and linking green spaces at many levels (including ground, podium and roof levels), is one of the major features of the building. This is formed of custom-designed green wall systems and terrace planters built in to the building facades. Urbis provided full landscape design services. The building is a showcase of sustainable design strategies, and significantly exceeds the enhanced greening requirements of development in the New Kai Tak District (Grand Award – 2014 Hong Kong Green Building Award in the category of "New Buildings – Buildings under Construction")



CIC ZERO-CARBON BUILDING AND PARK- FEASIBILITY STUDY, DESIGN AND CONSTRUCTION, HONG KONG

Client: Construction Industry Council
 The multi-award-winning project is Hong Kong's first zero-carbon development. The project comprises of a showcase building and park which seeks achieves net zero carbon emissions by adopting state-of-the-art design and technology in passive design, active design, energy conservation and energy minimisation. The design of the Park follows best sustainable design practice, and integrates a showcase Urban Native Woodland, which required specialist research into and sourcing of native plant material not readily available in local commercial nurseries.



WEST KOWLOON CULTURAL DISTRICT – CONCEPTUAL PLAN, HONG KONG

Client: West Kowloon Cultural District Authority
 Planning and Urban Design Team Leader on the winning Foster + Partners Proposal. Tasks involved the preparation of a conceptual landscape masterplan for the development of the 40 ha Cultural District in West Kowloon, Hong Kong. The proposed District is intended to be an iconic destination space that will be capable of providing a series of venues that will meet long-term arts, cultural and entertainment needs.



WEST KOWLOON CULTURAL DISTRICT – MASTERPLAN, HONG KONG

Client: West Kowloon Cultural District Authority
 Planning and Urban Design Team Leader on the development of the competition-winning Concept (earlier undertaken with Foster + Partners, Architects). Tasks involved the development of the District Masterplan for implementation by the WKCD. The proposed District is intended to be an iconic destination space that will be capable of providing a series of venues that will meet long-term arts, cultural and entertainment needs, and the Masterplan is the basis of all ongoing District Development.



DETAILED PLANNING OF A PROPOSED STADIUM COMPLEX AT KAI TAK, HONG KONG

Client: Home Affairs Bureau, HKSAR Government

A study for the Hong Kong Government to identify events that could be held in the stadium complex. Emphasis was placed on possible international events although local events were not neglected. The study also provided additional information that was to be utilised by a subsequent study that was commissioned to examine future stadium operation and financing.



HONG KONG SCIENCE PARK PHASE II, HONG KONG

Client: Hong Kong Science and Technology Parks Corporation

Development of Masterplan for Phases II and III of Science Park, and the detailed design and implementation of Phase 2 of the development. Phase 2 comprises of 6 low rise offices/laboratories, lake-side retail street, theatre, and a central park and lake built over basement circulation and parking structures.

The Project received an Award of Merit at the Construction Industry's 2008 Quality Awards, in the category of Sustainability.



HENNESSY CENTRE REDEVELOPMENT, 500 HENNESSY ROAD, CAUSEWAY BAY, HONG KONG

Client: Gear-up Investment Ltd (Hysan)

Redevelopment of the former Hennessy Centre to form Hysan Place. High-rise development, Hysan Place, comprises multi-level retail, open space, and office accommodation, forming a new commercial hub within the Causeway Bay District. The development optimizes the use of sustainable design strategies, and is one of the earliest of Hong Kong's inner-urban redevelopment projects to achieve a Platinum LEED rating.



IFC/HONG KONG STATION DEVELOPMENTS, HONG KONG

Client: Central Waterfront Property Management Co Ltd (Henderson Land and Sun Hung Kai Properties JV)

The Project comprises of a landmark mixed-use development on Hong Kong's new Reclamation Waterfront for which Urbis originally prepared development guidelines under the Central and Wan Chai Reclamation Development of Urban Design Parameters Study, for Government. Appointment to the Project was secured by Urbis by winning a limited conceptual design competition. The development comprises 2IFC, IFC Mall and Retail Bridges, and Four Seasons Hotel and Place. Areas designed by Urbis included complex podium landscapes, public open spaces, dining terraces, forecourts, linking bridges, streetscapes, roofscapes, sky terraces, pool decks, spa terraces and green roofs (Four Seasons Hotel and Four Seasons Place was the Winner of the 2008 Construction Industry Quality Award)



HSBC MAIN BUILDING – REFURBISHMENT OF PLAZA, HONG KONG

Client: HSBC

Full landscape design services for the refurbishment and redesign of the ground level public plaza beneath the HSBC Main (HQ) Building. The Assignment commenced with Urbis' development of Conceptual Design Proposals followed by the Detailed Design of the project into implementation in collaboration with One Space Architects. The intention was, in recognition of the bank's presence in Central since 1865, to generate a design that celebrated the historical development of the bank in Central District and the historical events that occurred from the formation of the bank to the present day. A map of Central was depicted in stone paving, and historic features and buildings illuminated by feature lighting. Illuminated glass exhibition panels were located at the edge of the new paved areas and integrate an illustrated storyline through time of the development of the Bank, Central District and the City. Granite Lion heads from the 1935 Bank were found, restored and installed at the southern edge of the plaza to form a new Lion Gateway.



HSBC HEADQUARTERS, 1 QUEEN'S ROAD CENTRAL, CENTRAL, HONG KONG, 35TH FLOOR, NEW EXECUTIVE OFFICE TERRACES, HONG KONG

Client: HSBC

Detailed Design Services for the development of external terraces and external furniture, taking into account the technical constraints of challenging existing construction techniques and structural designs by the original Architects – Foster and Partners, and security and safety issues.



CHINA RESOURCES BUILDING, AND HARBOUR ROAD GARDEN HONG KONG

Client : China Resources Property Limited

Enhancement and refurbishment of the China Resources Building and Harbour Garden. Full landscape design services for the re-design of Harbour Garden Public Open Space, pedestrian-ways, and dining terraces at walkway levels.



CENTRAL CITYSCAPE STREETScape ENHANCEMENT PROJECTS, HONG KONG

Client: Hongkong Land

Preparation of Strategic Streetscape Enhancement Masterplan for Central District; the implementation of Pilot Schemes at Prince's Building to test the robustness of detailed designs; and the subsequent phased implementation of schemes within the Core Central Area. Implemented Schemes included streetscapes at the Landmark, Chater Road, Princes Building, The Mandarin Hotel, Alexandra House, Jardine House, Jardine House Plaza, and Connaught Garden. Later schemes include the development of detailed design concepts for the application of Central Cityscapes proposals to streetscapes surrounding Exchange Square.



KWUN TONG TOWN CENTRE REDEVELOPMENT PROJECT , HONG KONG

Client: Urban Renewal Authority

Revisions to earlier Masterplan (an earlier assignment) to increase resident population; achieve planning requirements arising from a higher resident population; enhance development layouts and forms, achieve PNAP 152 Greening Requirements; confirm Tree Preservation, and Removal Strategies; and subsequently obtain S.16 Approval of revised Masterplan, LMP and TRA.



LANDSCAPE IMPROVEMENT WORKS OUTSIDE ST. GEORGE'S BUILDING, HONG KONG

Client: Kadoorie Estates Limited

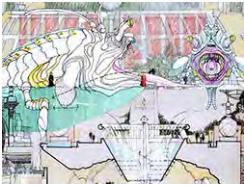
Development of proposals for integrating movable planters within public pedestrian pavements surrounding St George's Building, obtain approvals, and oversee the implementation of the Works, as an extension of/addition to Hongkong Land's Central Cityscapes Streetscape Enhancement Project (in which Kadoorie Estates Limited was a Stakeholder and Participant, and for which Urbis were the Project Landscape Architects).



AIG TOWER, CENTRAL, HONG KONG

Client : Bayshore Development Group Limited (CapitalLand)

Full landscape Design Services for AIG Tower forecourt, adjoining streetscapes, bridge link to Chater Garden and modifications to Chater Garden. The Project included the preparation of tree felling applications, tree transplanting works and compensatory planting plans.



OCEAN PARK LOWLAND REDEVELOPMENT MASTERPLAN COMPETITION, HONG KONG

Client: Ocean Park Hong Kong

Competition-winning entry for the development of themed design concept for the conversion of the former Waterworld area of Ocean Park into a themed marine-based entertainment attraction. Urbis were subsequently appointed to develop concepts, which resulted in the Adventure Bay Concept Masterplan.



FOUR SEASONS HOTEL AND FOUR SEASONS PLACE LANDSCAPES, HONG KONG

Client: Central Waterfront Property Management Co Ltd

Full Landscape Design Services for podium level public open spaces, forecourts and recreational pool decks and terraces. (Winner of 2008 industry Quality Award). These landscapes are located in part of the IFC/Hong Kong Station Developments.



THE AUSTIN AND GRAND AUSTIN, KOWLOON

Client: New World/Wheelock JV

Full Landscape Design Services for luxury residential development in a prime location within the new West Kowloon Reclamation District, associated with the MTRC's Austin Station. Landscape designs were provided for Streetscapes, Forecourts, Entrances, and ground-level Gardens; passive recreation and creative-play spaces on refuge floors in residential towers; and podium-level gardens and residents' club facilities which envelop/are integrated with the roofs of Austin Station. Urbis also provided conceptual themes for and assisted in the integration of artwork installations by a wide range of artists.



KOWLOON STATION DEVELOPMENTS, HONG KONG

Client : MTR Corporation

Preparation of Conceptual Landscape Masterplan for the entire Podium, integrating completed, committed and planned landscapes; the preparation of detailed landscape designs for podium level recreation areas to the north of podium-level Station Square; and the preparation of detailed landscape proposals for Elements Retail Mall and forecourt on level below podium.



C903 WONG CHUK HANG STATION, OCEAN PARK STATION, AND VIADUCTS, HONG KONG

Client: MTR Corporation

Aesthetic Design and Landscape Design Inputs (Full Landscape Design Services). The project comprises of threading an elevated railway through existing urban districts and environmentally sensitive areas, in which both residents and mature vegetation are affected by the works. Proposals considered significant changes to and the restoration of significant tracts of sensitive natural environments. Design inputs include developing contemporary innovative design solutions for viaduct structures and noise enclosures, context-sensitive design, and the enhancement of community facilities and public open spaces.



CELESTIAL HEIGHTS, HOMANTIN, KOWLOON, HONG KONG

Client: Cheung Kong Holdings

Preparation of Tree Surveys, Tree Felling Submission and the design of podium landscapes for high quality residential developments above a retail podium. The principal feature of the project is the perceived extension of the pool area to create a water-scape interspersed with planting, and the creative re-interpretation of traditional design themes – such as a pool surface designed as trompe l’oeil parterre garden, and the use of civic-scale fountains.



THE SUMMA, 23 HING HON ROAD, HONG KONG

Client: Kerry Project Management (H.K.) Limited

Full landscape design services for podium gardens, public streetscapes, pedestrian public pathways, and covered resident refuge areas. Covered refuge areas, for which Urbis was responsible for the design of all spaces/surfaces and art installations, are designed as if they are interior club spaces.



TSEUNG KWAN O SOUTH – CONCEPTUAL DESIGN STRATEGY FOR CENTRAL PUBLIC PARK, HONG KONG

Client: Private

Preparation of Conceptual Landscape Masterplan for a linear park extending between TKO Station and the Waterfront, at the core of the Tseung Kwan O South Reclamation District and thresholds to adjoining reclamation developments and adjacent streetscapes, with a view to making a developer stakeholder-led submission to Government to prompt consideration of the early development of the Park/development of a Temporary Park. The design strategy seeks to enhance the public realm and district character in the short and long term, and provide development parameters which will encourage the integration of the public realm and adjoining reclamation developments.



TENDER SUBMISSION FOR ASD CONTRACT NO. SS A502 - DESIGN AND CONSTRUCTION OF TIN SHUI WAI HOSPITAL, HONG KONG

Client: Architectural Services Department, HKSAR Government

Project Landscape Design Consultant for the Tender Submission. Designs were prepared for ground-level entrances and gardens and rooftop terraces, and included custom-designed topiary and furniture and art installation proposals.



TAI ZI WAN COMMERCIAL COMPLEX PROJECT, SHENZHEN, PRC (PRINCE BAY MIXED USE DEVELOPMENT) - CONCEPTUAL LANDSCAPE MASTERPLAN FOR PROMENADE AREAS

Client : Private

Landscape Masterplanning and Concept Design Development Services for waterfront sites and in so doing, circumscribing the location and configuration of landscape areas which are to be constructed (on structure) over the sea. The project includes developing place-making strategies, considering landscape integration strategies at interface areas with planned developments on adjoining sites, and reflecting the Client’s commitment to a design philosophy which embraces the Artisanal Movement.



PROPOSED RETAIL DEVELOPMENT AT GUANGZHOU PARC CENTRAL, PRC

Client: Sun Hung Kai Properties

Full design services for landscapes for re-provided parkland above a landmark low-rise retail development hub at the heart of the New Pearl River City District of Guangzhou. Landscape designs include basement, podium and rooftop parkland (partially beneath high ETFE shade canopies); extensive range of water features including interactive features using water skins, dry fountains and mist fountains; extensive vertical green walls; streetscapes; and preliminary concepts for art installations within the site (executed by Korean artist Pilyun).



MIXC, CRL HEFEI GREEN ZONE PARCEL 38, HEFEI, PRC

Client: China Resources Land (Hefei) Limited

Full landscape Design Consultancy Service from Concept Design Stage to Construction Implementation for a prestigious mixed-use development which will set a new benchmark for development in Hefei, comprising a Retail Centre, Commercial Office Tower and Grand Hyatt Hotel Tower. Proposals for the Grand-Hyatt Hotel and podium roof levels, which include a rooftop garden and entertainment village, were only required to Schematic Design level.



GUANGZHOU INTERNATIONAL FINANCE PLAZA (IFP) DEVELOPMENT, PRC

Client: Guangzhou Corporate Worth Holdings Limited

Conceptual design, detailed landscape design, tender documentation and construction supervision of all hard and soft landscape works for the forecourt and terraces of a new office tower development in the core area of Guangzhou's new Pearl River City.



XUZHOU L DEVELOPMENT - DA LONG HU, XIN CHENG DISTRICT, XUZHOU, JIANGSU, PRC

Client: Henderson Land

Preparation of a conceptual landscape master plan and landscape design proposals with a view to securing planning approvals for development. Proposals define the character of public and private open spaces, treatments to existing canal edges, and the component parts of the development masterplan.



PREPARATION OF PRELIMINARY CONCEPT PLAN FOR EAST PORT, PORT OF TIANJIN, PRC, AND PREPARATION OF LANDSCAPE DESIGN TENDER DRAWINGS FOR KEY INITIAL DEVELOPMENTS.

Client: Private

Provision of planning, urban design, and landscape proposals for a key development area within the East Port Development Area, Tianjin, designated for resort, recreational, marine and residential development. Following the preparation and approval of the Development Masterplan, Urbis provided Conceptual and Schematic Landscape Design Proposals for the entire development, and subsequently Tender Documentation for the Hotel, Villas, Exhibition and Convention Centre, Phase 1 Promenade, Pier, and Yacht Club components.



SHI-LIU-PU HUANGPU RIVERSIDE REGENERATION PROJECT, PRC

Client: Shanghai Huangpu River Banks Development Construction Investment (Holdings) Co., Ltd.

Conceptual Designs for the redevelopment of the Nine Shops Waterfront District to integrate retail, office and residential uses, new promenades, and cruise ship mooring areas.



WAI TAN YUAN REDEVELOPMENT MASTERPLAN FOR THE HISTORIC BUND DISTRICT, PRC

Client: Shanghai Huang Pu District Urban Planning Administration Bureau & New Huang Pu Group Co., Ltd.

Preparation of urban design strategy for urban renewal and heritage enhancement in one of Shanghai's premier historic districts.



VIETINBANK BUSINESS CENTRE, MIXED USE DEVELOPMENT, VIETNAM

Client: Foster + Partners Limited

Conceptual and Detailed Design proposals (to Preliminary Design) for a signature development in a new development area in Hanoi, in collaboration with lead architect Foster + Partners. The project comprises landscape designs for a mixed-use development integrating a multi-level retail complex, exhibition and convention centre, hotel and signature office tower incorporating the new Corporate Headquarters for VietinBank. Urbis was responsible for the design of landscape treatments in internal and external spaces, including forecourts, gardens, podium terraces and roof gardens, and sky-gardens.



DUBAI TOWERS DEVELOPMENT, THE LAGOONS, DUBAI, UAE

Client: Sama Dubai LLC

Schematic landscape design service for extensive public and private landscape areas associated with the iconic Dubai Towers Development (in collaboration with TVS Architects), comprising multi-level retail and entertainment podia, 4 iconic towers containing hotels, offices, and residences –all located on a large artificial island at the centre of the prestigious Lagoons development.

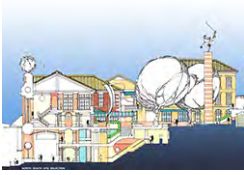
Dubai Tower is intended to be the signature iconic development of the entire Lagoons Project.



THE LAGOONS - LANDSCAPE DESIGN & ICONIC BRIDGE DESIGN SERVICES, DUBAI, UAE

Client: Sama Dubai LLC

Landscape designs for all public landscape areas within a new urban district along the Dubai Creek. The total landscape area is approximately 250 ha, and encompasses a wide range of landscape types including waterfront promenades, public parks, urban streetscapes, commercial and residential landscape, and wetland landscapes adjacent to the neighbouring Ras Al Khor Wildlife Sanctuary.



CENTRAL POLICE STATION, MAGISTRACY AND VICTORIA PRISON HERITAGE AND TOURISM CONCEPT

Client: Project Chambers

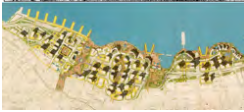
Initiating conceptual planning and design study for the creative re-use and enhancement of an existing listed heritage site integrating buildings of high cultural and heritage value. The proposal was reviewed and adopted by Government, the premises vacated, and the resulting project is being implemented by the Hong Kong Jockey Club and their Consultants.



CENTRAL AND WAN CHAI RECLAMATION URBAN DESIGN PARAMETERS STUDY

Client: The Urban Area Development Office of the Territory Development Department of the Hong Kong Government.

Preparation of an Outline Development Plan for an extension of the existing Central Business District across 108 ha of new foreshore and the redevelopment of 50 ha of adjoining development sites; Urban Design Criteria for new Reclamation Development Districts in the Study Area; Site Specific Urban Design Parameters for Key Commercial Development Sites, including those linked to or affected by the proposed North Hong Kong Island Line, Lantau Line and Airport Railway Line of the Mass Transit Railway; Guidelines on Site Disposal Procedures; and a Design Guide for the entire Study Area.



The Study was awarded a Silver Award from the Hong Kong Urban Council and the Hong Kong Institute of Landscape Architects under the Hong Kong Green Project Award Scheme (1995); and the Hong Kong Institute of Planners 1996 Silver Medal Award.



WEST KOWLOON RECLAMATION URBAN DESIGN PARAMETERS STUDY

Client: Planning Department, HKSAR Government

Preparation of a Revised Urban Design Concept Plan for the entire West Kowloon Reclamation Development Area [430ha], taking into account the Kowloon-Canton Railway Corporation's planned West Rail Project, and the definition of detailed site design parameters for 20 key development sites within the reclamation area (including the site for the West Rail's West Kowloon Station).



HONG KONG AIRPORT URBAN DESIGN GUIDELINES AND STANDARDS MANUAL

Client: Provisional Airport Authority

Development of an Urban Design Concept for the entire Airport Site (1,200ha.), and an Urban Design Guidelines and Standards Manual for the Airport