

## Alexander [Sandy] M Duggie

BSc(Hons), BPhil, FHKILA, RLA, CMLI, MHKIEIA, MHKIUD, MHKIQEP  
BEAM Pro (NB, EB, ND)  
Managing Director – URBIS Limited



Sandy is a Registered Landscape Architect, a Fellow of the Hong Kong Institute of Landscape Architects and the Managing Director of URBIS Limited, a Hong Kong based multi-award winning design consultancy established in 1977, and providing services in masterplanning, urban design, town planning, landscape design, golf course design and environmental impact analysis. He has lived in Hong Kong and worked for URBIS since 1985, during which time he has contributed to several major territorial and strategic planning studies for the Hong Kong Government, and designed a very large range of private and public sector projects from small private gardens to large scale public infrastructure works. Designed projects include public parks, open spaces and streetscapes, schools, hospitals, hotels, residential, commercial and mixed-use developments and golf courses. Since 1977 URBIS has undertaken over 2,400 projects throughout the Asia Pacific region, South Asia and the Middle East and has won well over 250 awards and competition designs both locally and internationally. Many of these award-winning projects Sandy has worked on, designed and / or directed personally. He is particularly concerned with the promotion of sustainable design and designing the public realm to meet the needs of modern society. He is also a Director of the BEAM Society, a Member of the HKGBC Green Building Faculty, a Co-opted Member of the HKGBC Green Labelling Committee and a Director of the Professional Green Building Council.

### EDUCATION / PROFESSIONAL QUALIFICATIONS

BSc (Hons) in Geography, University of Aberdeen, UK	1978
B Phil in Landscape Design (Newcastle-upon-Tyne) (awarded The Brian Hackett Prize as top student)	1981
Member of Landscape Institute, UK (CMLI)	1984
Fellow of The Hong Kong Institute of Landscape Architects (FHKILA)	2008 (member since 1988)
Registered Landscape Architect (RLA)	1999
Corporate Member of Hong Kong Institute of Environmental Impact Assessment (MHKIEIA)	2002
Member of the Hong Kong Institute of Urban Design (MHKIUD)	2010
BEAM Professional (BEAM Pro (NB, EB, ND))	2016
Member of the Hong Kong Institute of Qualified Environmental Professionals (MHKIQEP)	2017

### PROFESSIONAL / INSTITUTIONAL POSTS

Chairman	Landscape Architects Registration Board	2002 - 2005
Vice Chairman	Landscape Architects Registration Board	1997 - 2002
Chairman	HKILA Board of Examiners	1996-98, 2001-03, 2004-05, 2009-2011, 2015-19
Member	HKILA Board of Examiners	1994 - 2019
Elected Member	HKILA Executive Council	1988 - 1990
Appointed Member	HKILA Executive Council	1990 - 1994
HKILA Representative	Planning Sub-committee of the Land and Development Advisory Committee	2002 - 2015
External Examiner	University of Hong Kong, Master in Landscape Architecture	2011
External Examiner	University of Hong Kong, Bachelor of Arts in Landscape Studies	2012-2016
External Advisor	Technological and Higher Education Institute of Hong Kong, Bachelor of Landscape Architecture	2014-2015
Director	BEAM Society Limited	2014 – 2020, 2021-2023
Honorary Treasurer	BEAM Society Limited	2022 - 2023
Member	Hong Kong Green Building Council Limited Green Labelling Committee	2016 – 2019
Co-opted Member	Hong Kong Green Building Council Limited Green Labelling Committee	2020 - Present
Member	Green Building Faculty, Hong Kong Green Building Council Limited	2016 – 2024
Director	Professional Green Building Council	2021-2023

### EMPLOYMENT

Sep 1985 - Present	URBIS LIMITED, Hong Kong (Managing Director since 1995)
1981 - 1985	DEREK LOVEJOY & PARTNERS, Edinburgh, Scotland

## SELECTED ACTIVE PROJECTS

**SITE 3, INLAND LOT NO. 9088, NEW CENTRAL HARBOURFRONT, HONG KONG**

Client: Henderson Real Estate Agency Limited

Executive Landscape Consultancy Services for this iconic 400m-long mixed-use development linking the historic CBD of Central District, Hong Kong with the Victoria Harbour Waterfront. The tender-competition-winning design features public open spaces at multiple levels including the tree-lined Grand Boulevard, the Star Ferry Clock Tower Plaza and al fresco dining at ground level; a large multi-purpose Countdown Plaza and Eco Garden on the first floor with a Harbour Amphitheatre of steps leading down to the waterfront; a shady Chill-Out Space at the second floor and a major 300m-long 'Rolling Forest' roof garden exploiting the spectacular views and providing a biodiverse and biophilic landscape experience for Hong Kong citizens and tourists alike.

**CA/015 - BATCH 1A DEVELOPMENT OF HONG KONG-SHENZHEN INNOVATION AND TECHNOLOGY PARK**

Client: Hong Kong-Shenzhen Innovation and Technology Park Limited

Full landscape design services for the first batch of buildings (Buildings 8, 9 and 11) and associated open spaces in Phase 1 of the Hong Kong & Shenzhen Innovation and Technology Park. Open spaces include the 'Eco Walk', 'Philosopher's Walk' and 'Resilience Living Courtyard'. Services also include BIM services for hard and soft landscape.

**CA/013 - HONG KONG-SHENZHEN INNOVATION AND TECHNOLOGY PARK**

Client: Hong Kong-Shenzhen Innovation and Technology Park Limited

The Hong Kong-Shenzhen Innovation and Technology Park is located at the Lok Ma Chau Loop. The development intention is to establish a key base for co-operation in scientific research, through liaising with top-tier enterprises, research and development institutions and higher education institutions in the Mainland and overseas. URBIS' scope includes the preparation of a Landscape Master Plan and Concept Design that embodies the latest thinking in sustainable and resilient design, sponge city planning, SUDS and incorporation of smart technologies.

**PHASE 3B, GALAXY GARDENS DEVELOPMENT, MACAU**

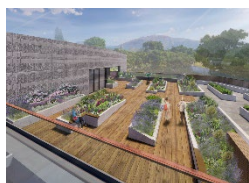
Client: Galaxy Cotai Project Management Limited

Executive landscape architectural services (softscape) to the Phase 3B Galaxy Garden development in Macau. The development includes an experiential and immersive botanical garden, a cooled observation ring, an outdoor amphitheatre and a bridge to the existing Galaxy Lot 1 Pearl Lobby.

**TAIKOO PLACE RE-DEVELOPMENT PHASE 2A, 2B & STREETSCAPE, QUARRY BAY, HONG KONG**

Client: Swire Properties Limited

Executive Landscape Consultancy Services for the redevelopment of this prestigious commercial development comprising 2 new commercial towers, 2 new public open spaces and extensive streetscapes linking the district together in a cohesive whole. Close design collaboration with concept designer Gustafson Porter. The first of the two commercial towers, One Taikoo Place is the first Asian commercial building acquiring WELL core & shell platinum certification and the first Hong Kong commercial building acquiring triple platinum in green certification including BEAM Plus, LEED and WELL. The design also received a GBA Grand Award.

**THE 21<sup>ST</sup> CENTURY NATURE CLASSROOM - MAI PO NATURE RESERVE INFRASTRUCTURE UPGRADE PROJECT**

Client: World Wide Fund for Nature Hong Kong

Full landscape design service for the transformation of Mai Po into a 21st Century Nature Classroom in order to facilitate a unique learning experience and effectively manage an important living ecosystem. The project includes retrofitting the existing Mai Po Education Centre, alteration of existing Peter Scott Field Visitor Centre, creation of new green teaching block, renovation of existing bird hide and creation of a new hide, and widening of footpaths. Services also include LVIA for EIAO, VIA for Planning Application and tree survey and removal application.

**CINGLEOT PREMIUM LOGISTICS CENTRE, HONG KONG INTERNATIONAL AIRPORT**

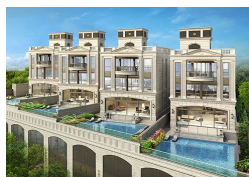
Client: Hong Kong Cingleot Investment Management Limited

Full landscape design services for a Premium Logistic Centre at Hong Kong International Airport. The logistics centre is tailored for cross-border e-commerce operations and provides a flexible model for future air-cargo and logistics growth and changes.

**GRAND HOMM, 17 SHEUNG SHING STREET, HO MAN TIN, KOWLOON, HONG KONG**

Client: Gold Topmont Limited

Full landscape design services for the hard and soft landscape design of a new luxury residential development in Ho Man Tin in Art Deco style. Services include statutory submissions regarding the Tree Preservation and Tree Removal Proposal and Landscape Master Plan.



### **RESIDENTIAL DEVELOPMENT, NO. 16-18 CAPE ROAD, HONG KONG**

Client: Welly Engineering Limited

Full landscape design services for this redevelopment project which involves the demolition of two existing houses, and the construction of four new 3-storeys houses with an additional Lower Ground Floor that serves as underground car park and Residents' Recreational Facilities. The landscape design complements the Classical style of the architecture of the houses in a modern way with full length 'infinity' pool edge to provide direct visual connection to the sea view beyond. Services include TRA submission.



### **PROPOSED RESIDENTIAL DEVELOPMENT AT 4138 TAI PO ROAD, TAI PO KAU, TAI PO**

Client: Manhattan Development Limited

Full landscape design service for a luxury low-rise residential development on a densely wooded hillside near Tai Po Kau and overlooking Tolo Harbour. Services include tree survey of approx. 2,000 trees, Tree Removal Application, Landscape Master Plan submission, hard and soft landscape design and SCC for LMP and Tree Works.

## **SELECTED COMPLETED PROJECTS : 2011 - PRESENT**



### **SIX PRIVATE GARDENS ON LANTAU ISLAND, HONG KONG**

Client: Private

Executive landscape design services for the hard and soft landscape design of a 6 luxurious private mansions with large gardens on a hilltop site on Lantau Island with fabulous views. Close design collaboration with concept designer Randle Siddeley Associates.



### **IL PICCO, PHASE 18, DISCOVERY BAY, HONG KONG**

Client: Hong Kong Resort Company Limited

Full landscape design services for the hard and soft landscape design of a new low-rise residential development with 24 houses on a hilltop site in Discovery Bay with fabulous views. Services include LMP submissions.



### **133 PORTOFINO, 133 HONG KIN ROAD, SAI KUNG**

Client: Sino Group

Full landscape design services for a luxury low rise residential development located in Sai Kung. The scope also includes LMP and TPRP Submissions.



### **KWUN TONG DISCIPLINED SERVICES QUARTERS, KWUN TONG, HONG KONG**

Client: Architectural Services Department

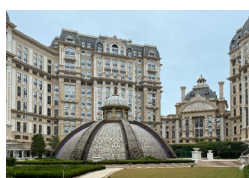
Full landscape design services, including updated tree survey, for Design Build Contract. Project design promotes a 'Green Living' lifestyle concept for the residents with attractive and sustainable landscape facilities including a small community farm, children's play areas, and multi-purpose areas for ad hoc or organised activities for residents. Landscape works include treatment of slope stabilisation works to natural terrain slope on adjacent Government land.



### **SHEUNG MAN COURT, TEXACO ROAD, TSUEN WAN, HONG KONG**

Hong Kong Housing Authority

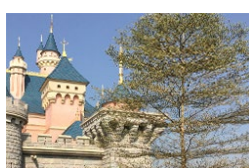
Full landscape design services for a non-standard domestic block of Subsidized Sale Flats at Texaco Road.



### **GRAND LISBOA PALACE, COTAI, MACAU**

Client: SJM Holdings Ltd

Full landscape design services for the construction of a hotel casino complex in Cotai, Macau, themed on a 17th Century Royal French classical architectural and garden style with Chinese cultural overlay. Includes two 6-star Hotels by Versace and Karl Lagerfeld, one 5-star Hotel, and extensive associated landscape gardens at ground and podium levels covering approximately 10 hectares.



### **REDEVELOPMENT OF CASTLE HUB, HONG KONG DISNEYLAND**

Client: Walt Disney Imagineering Asia Ltd

Full landscape design services for the redevelopment of the central Castle hub in Hong Kong Disneyland, including the substantial enlarging of the Castle and creation of adjacent new amphitheatre for shows related to the Castle and redesign of the water features and hard and soft landscape. Scope also includes tree survey and recommendations.





### **VICTORIA DOCKSIDE, TSIM SHA TSUI, KOWLOON, HONG KONG**

Client: New World Development Ltd

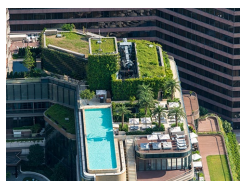
Detail landscape design services for the comprehensive redevelopment of the former New World Centre as the new Victoria Dockside on a prime site on Tsim Sha Tsui harbour-front. Design collaboration with concept designer James Corner Field Operations. Redevelopment creates a benchmark retail and hotel development that provides a hub of attractions for the city. Scope includes landscape gardens at numerous different levels within the 2 tower developments and also remodelling public streetscapes and public open spaces including Salisbury Garden & Avenue of Stars. Multi-award winning project receiving awards from **HKILA, HKIUD, HKGBC, IFLA and CTBUH**.



### **ROSEWOOD HONG KONG, VICTORIA DOCKSIDE, TSIM SHA TSUI, HONG KONG**

Client: New World Development Ltd

Detail landscape design, tender documentation and construction supervision services for this prestigious new 5-star hotel created as part of the Victoria Dockside mixed-development located on a prime site on Tsim Sha Tsui harbour-front. Design collaboration with concept designer P Landscape.



### **K11 ARTUS, VICTORIA DOCKSIDE, TSIM SHA TSUI, KOWLOON, HONG KONG**

Client: New World Development Ltd

Detail landscape design, tender documentation and construction supervision services for this new hotel and serviced apartments created as part of the Victoria Dockside mixed-development located on a prime site on Tsim Sha Tsui harbour-front. Design collaboration with concept designer P Landscape. The design received an **A&D Award**.



### **CE30/2008(CE) KAI TAK DEVELOPMENT - INFRASTRUCTURE DESIGN & CONSTRUCTION**

Client: Civil Engineering and Development Department, HKSAR Government

Major urban development on the site of Hong Kong's former Kai Tak international airport. Services provided include review and revision of the town planning of the whole development; town planning review, urban design and revised RODP of the Runway Precinct; preparing a Planning Landscape and Urban Design Study (PLUD) for KTD; landscape planning review of Kai Tak River and an Environmentally Friendly Transportation System; assisting public consultation; and full landscape design services for numerous works contracts covering major infrastructure works including the pedestrian streets in the Grid Neighbourhood; local and distributor roads in KTD; and the Kai Tak River channel itself. Services also include tree surveys and removal applications and LVAs for various designated projects. The proposed infrastructure works are intended to enable the construction of public and private sector developments with completion of development by 2021.



### **CE 22/2009 (DS) – RECONSTRUCTION & REHABILITATION OF KAI TAK RIVER, HONG KONG**

Client: Drainage Services Department, HKSAR Government

Full landscape design services for the rehabilitation and revitalisation of an old nullah in Kowloon City so as to provide a new focal point for the local community. Services include tree survey and removal application; design and supervision of planting trial works intended to determine what is possible to plant within the nullah; development of several hard and soft channel landscape design options for the channel; assisting public consultation; detail design; tender documentation and construction inspection. The design received an **HKIUD Grand Award, HKILA Award of Merit and Finalist Award from UKLI**.



### **SOUTH ISLAND LINE: C901 ADMIRALTY STATION, HONG KONG**

Client: MTR Corporation Limited

Full landscape design services for the new interchange station and running tracks that will connect the South Island Line to the existing MTRC rail network located on Hong Kong Island. A major component of the work is the redesign of Harcourt Garden, an important public open space which is affected by the construction and operation of the railway.



### **SALISBURY GARDEN, TSIM SHA TSUI, HONG KONG**

Client: New World Development Ltd

Detail landscape design and construction supervision services for the redevelopment of this public open space located adjacent to the Space Museum on Tsim Sha Tsui harbour-front. The project is part of the comprehensive redevelopment of the former New World Centre as the new Victoria Dockside including the underground Palace Mall located beneath Salisbury Garden. Close design collaboration with concept designer James Corner Field Operations. Multi-award winning project receiving awards from **HKILA, HKIUD, HKIS, World Landscape Architecture, Cityscape Awards and Architizer A+ Awards**.



### **AVENUE OF STARS, TSIM SHA TSUI, HONG KONG**

Client: New World Development Ltd

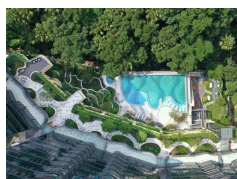
Detail landscape design and construction supervision services for the redevelopment of this famous public open space located on Tsim Sha Tsui harbour-front. The project is part of the comprehensive redevelopment of the adjacent former New World Centre as the new Victoria Dockside. Close design collaboration with concept designer James Corner Field Operations. Multi-award winning project receiving awards from **HKILA, HKIUD, World Landscape Architecture, Cityscape Awards** and **Architizer A+ Awards**.



### **GARDEN OF STARS, TSIM SHA TSUI, HONG KONG**

Client: NW Project Management Limited

Full landscape design service for this new extension of the Avenue of Stars into the existing Wing On Garden Plaza (previously also designed by URBIS) located above Tsim Sha Tsui East MTR Station. Project includes temporary and permanent phasing of Avenue of Stars exhibits including posters, statues and handprints of famous stars of the Hong Kong movie scene.



### **UNIVERSITY HEIGHTS, KOTEWALL ROAD, POK FU LAM, HONG KONG**

Client: Chinachem Group

Full landscape design services for the construction of a high end residential development overlooking the University of Hong Kong. Landscape design aims to exploit the fabulous views over the University grounds and western Hong Kong Island. Facilities include terraced landscaped gardens and an extensive swimming pool deck with infinity edge. Services include tree survey & tree removal application.



### **THE PAPILLONS, TONG CHUN STREET, TSEUNG KWAN O, HONG KONG**

Client: Chinachem Group

Full landscape design services for the construction of a high end residential & retail development in south Tseung Kwan O. Landscape facilities include a retail promenade, a riverside promenade, a swimming pool deck with jacuzzi and spa facilities, and a community garden with BBQ facilities. Services include tree survey & tree removal application.



### **ALTO RESIDENCES, LOT 95, TSEUNG KWAN O, HONG KONG**

Client: Strongly Limited

Full landscape design services for the construction of a high end residential & retail development in south Tseung Kwan O. Landscape facilities include a retail promenade, a waterfront promenade, a swimming pool deck with jacuzzi and spa facilities, and extensive gardens framed by tall clipped hedges.



### **JOCKEY CLUB HOME FOR HOSPICE, SHA TIN, HONG KONG**

Client: Society for the Promotion of Hospice Care

Full landscape design services for the construction of a new hospice centre which is a non-profit making nursing home for terminally ill persons. The landscape design plays an important role by providing a peaceful, restful and homely garden environment for the enjoyment of staff, residents and their visiting families and friends. Services also include tree survey and tree removal application.



### **KINGSTON INTERNATIONAL CENTRE, KOWLOON BAY, HONG KONG**

Client: Swire Properties Limited

Detail landscape design services for the construction of a landmark office development located on a prime site in Kowloon East bounded on two sides by a large public open space that forms an integral part of Government's "GO2 Green Link" that is an important component of the urban design plan for "Kowloon East CBD2". Services include LMP Submissions and hard and soft landscape detail design, tender documentation and construction supervision. Close design collaboration with concept designer Randle Siddeley Associates.



### **SWIRE LEADERSHIP CENTRE, PUI O, LANTAU ISLAND, HONG KONG**

Client: Swire Properties Limited

Full landscape design services for the construction of a management training facility in a beautiful wooded site on the south side of Lantau Island. The scheme is designed to maximise the incorporation of sustainable building principles and initiatives. Facilities include a landscape courtyard for outdoor teaching, gardens with organic farming opportunities and an extensive green roof. Services also include tree survey and tree removal application.



### **LISBOA THEME PARK, COTAI, MACAU**

Client: SJM Holdings Ltd

Landscape concept design services for a hotel casino complex and theme park in Cotai, Macau, themed on a 17th Century Royal French classical architectural and garden style with Chinese cultural overlay including a re-creation of the former Summer Palace in Beijing. Includes one 6-star Hotel, three 4 star hotels and extensive associated landscape gardens at ground and podium levels covering approximately 10 hectares.





### REHABILITATION OF ANDERSON ROAD QUARRY, SAU MAU PING, KOWLOON, HONG KONG

Client: Civil Engineering & Development Department, HKSAR Government

Full landscape design services for the landscape rehabilitation works for Anderson Road Quarry located to the north of Sau Mau Ping, on the south-western slopes of Tai Sheung Tok. The project was phased over 11 years from 2007 to 2017 and involved the rehabilitation and screening of the extensive excavated rock slope faces of the quarry through the use of various landscaping techniques to minimize the visual impact of the quarry as viewed from afar.



### DEVELOPMENT OF BEAM PLUS NEIGHBOURHOOD SUSTAINABILITY ASSESSMENT TOOL

Client: Hong Kong Green Building Council

Provision of technical advice on the landscape and ecological aspects of the creation of a new sustainable building assessment tool for the HKGBC to promote sustainability in the design of the public realm, specifically designed to assess projects at their masterplanning stage, and to be complementary to the HKGBC's existing assessment tools BEAM Plus NB and BEAM Plus EB.



### HIKING TRAIL FEASIBILITY STUDY, KAU SAI CHAU, SAI KUNG, HONG KONG

Client: Jockey Club Kau Sai Chau Public Golf Course Limited

Feasibility study for a proposed hiking trail on Kau Sai Chau island designed to connect 2 ends of an existing hiking trail without having to traverse the golf course. The Study recommends a preferred trail alignment that is safe for both Hikers and Golfers, and interesting for the Hikers, taking into account local points of interest, good views to the surrounding landscape, tidal activity, and local flora and fauna.



### WHITESANDS, SOUTH LANTAU ROAD, LANTAU ISLAND, HONG KONG

Client: Swire Properties Limited

Full landscape design services for the construction of a 29 detached house development at Cheung Sha on Lantau Island. Architect PDP East's design creates sophisticated, stylistic yet not overtly luxurious homes, completed in a cost effective and environmental sustainable manner. Facilities include a simple yet sleek clubhouse with swimming pool and luxuriant planting to complement country living. Services also include tree survey & removal application.



### WATERSIDE, SOUTH LANTAU ROAD, LANTAU ISLAND, HONG KONG

Client: Swire Properties Limited

Full service for soft landscape works including tree removal application and all government submissions. The development comprises of two luxury 2-storey houses with fabulous sea views.



### DRAGONS RANGE, KAU TO SHAN, SHA TIN, HONG KONG

Client: Kerry Properties Limited

Full landscape design services for the construction of a high end residential development in a beautiful landscape setting high in the hills overlooking Shatin. Landscape design aims to blend the new facilities with the existing landscape context. Facilities include a 10,000sqft central lawn, swimming pool deck & jacuzzi, organic community farm, pet garden, BBQ areas & children's play areas. Services also include tree survey & tree removal application.



### GOLF ACADEMY, KAU SAI CHAU GOLF COURSE, SAI KUNG, HONG KONG

Client: Hong Kong Jockey Club Kau Sai Chau Golf Course

Full landscape design services for the construction of a new Golf Academy including golf training facilities, practice areas, staff and guest accommodation and realignment of 4 existing golf holes on the South golf course. Services include tree survey and tree removal application, and preparation of a LVIA for an EIA under the EIAO. (Project terminated following completion of tender stage.)



### CONTEMPORISATION OF PACIFIC PLACE, ADMIRALTY, HONG KONG

Client: Swire Properties Limited

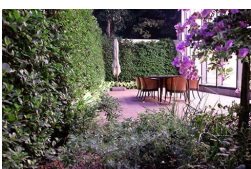
Full soft landscape design services for the renovation and contemporisation of Pacific Place Level 4 podium and Justice Drive frontage designed by Thomas Heatherwick. Close collaboration with Thomas Heatherwick on the development of a planting design style that complements his organic architectural design.



### HONG KONG INTERNATIONAL AIRPORT 3<sup>RD</sup> RUNWAY ENVIRONMENTAL IMPACT ASSESSMENT

Client: Airport Authority Hong Kong

Landscape and visual impact assessment consultancy services for the Environmental Impact Assessment for the Third Runway Project in order to comply with the statutory requirements under the Environmental Impact Assessment Ordinance (EIAO).



### 1 & 3 EDE ROAD, KOWLOON TONG, HONG KONG

Client: Kerry Properties Limited

Full landscape design services for the construction of a high end residential development comprising two 13-storey towers and a large detached 2-storey house with a large private garden. Landscape design adopts an English Garden style. Facilities include a central landscape garden with water feature, swimming pool deck and jacuzzi.

penthouse gardens, BBQ areas & children's play areas. Services also include tree survey & tree removal application.



### **AZURA, 2 SEYMOUR ROAD, CENTRAL, HONG KONG**

Client: Swire Properties Limited

Full landscape design services for the construction of a luxury residential development in Central comprising one 50-storey tower. Landscape design adopts a sleek contemporary style. Facilities include a swimming pool deck with jacuzzi and BBQ area, and penthouse gardens with swimming pools offering stunning views over Victoria Harbour. Services also include tree survey and tree removal application.



### **MAGGIE'S CANCER CARING CENTRE, TUEN MUN HOSPITAL, HONG KONG**

Client: The Keswick Foundation

Detail landscape design services for a concept design by Lily Jencks. Maggie's provides exceptional emotional and psychological support, free of charge, within a unique healing environment to empower those touched by cancer to live with, through and beyond. The garden incorporates traditional Chinese Garden design principles in a contemporary setting & plays a vital role in providing a sensitive, warm and loving environment.



### **A COMPREHENSIVE STREET TREE MANAGEMENT PLAN FOR HONG KONG**

Client: Development Bureau, HKSAR Government

Development of a comprehensive street tree management plan that defines the framework and methodology for future management of street trees in Hong Kong so as to achieve a sustainable tree stock of high quality that maximizes the environmental, social and economic benefits that street trees offer to Hong Kong citizens, and that promotes public safety and minimizes risks associated with trees in the public realm.



### **78 HUNG TO ROAD, KWUN TONG, HONG KONG**

Client: Henderson Land

Full landscape design services for the construction of a new office development in Kowloon East. Landscape areas include streetscape and podium deck landscape.



### **OPUS HONG KONG, 53 STUBBS ROAD, MID LEVELS, HONG KONG**

Client: Swire Properties Limited

Full landscape design services for the construction of a luxury residential development on a prime site on the Peak with stunning 360 degree views. Scheme includes intricately stepped retaining walls and associated luxuriant planting, private gardens with infinity edge swimming pools and extensive roof gardens and plunge pools for penthouse flats. Services included tree survey and tree removal application.



### **RESTORATION OF SHEK O QUARRY, HONG KONG**

Client: Civil Engineering and Development Department, HKSAR Government

Full landscape design services for the landscape restoration of Shek O Quarry and the creation of a Marine Cove, including the re-establishment of floral and fauna communities with a view to the long term reestablishment of a native woodland community that blends with the surrounding landscape context including Cape D'Aguilar Site of Special Scientific Interest. Restoration activities phased over an 18-year period. The design received an **HKILA Award of Merit** and **UKLI Highly Commended Award**.



### **KCRC EAST RAIL EXTENSIONS – HDD300 EAST TSIM SHA TSUI STATION, HONG KONG**

Client: MTR Corporation Limited

Full landscape design services for the construction of an underground railway through the Tsim Sha Tsui urban area, including a new station in East Tsim Sha Tsui. The landscape works include re-provision of Signal Hill Garden, Middle Road Children's Playground and Wing On Garden and Tsim Sha Tsui Promenades, including redesign of associated streetscapes. Services include tree survey and tree removal application.



### **WING ON PLAZA GARDEN, TSIM SHA TSUI, HONG KONG**

Client: KCRC Corporation

Full landscape design service for this public open space redeveloped as part of the KCRC East Rail Extensions railway development. Wing On Plaza Garden is located above the Tsim Sha Tsui East MTR Station and includes terraced lawn areas, water features, a small performance area, lush planting and shaded seating areas that exploit the views to Victoria Harbour.



### **MIDDLE ROAD CHILDREN'S PLAYGROUND, TSIM SHA TSUI, HONG KONG**

Client: KCRC Corporation

Full landscape design service for this public open space redeveloped as part of the KCRC East Rail Extensions railway development. Middle Road Children's Playground is located above the Tsim Sha Tsui East MTR Station and includes extensive children's play areas set amongst lush planting with shaded seating for supervising parents and guardians. An Old and Valuable Tree, *Ficus virens sublancoolata*, was successfully preserved during the construction process.





### **MANULIFE CENTRE, WAI YIP STREET, KWUN TONG, HONG KONG**

Client: Henderson Land

Full landscape design services for the construction of a new office development in Kowloon East. Landscape areas include streetscape, basement car park atrium, podium deck landscape, clubhouse garden landscape and internal lobby landscape.



### **EXPRESS RAIL LINK – AGREEMENT NO. C8001 - TREE TRANSPLANTING / FELLING, HONG KONG**

Client: MTR Corporation Limited

Provision of support services to MTRC to obtain the routewide Tree Removal Application approval for approximately 15,000 trees on the Express Rail alignment. Scope of works includes design of temporary holding nurseries; sourcing of sites for permanent transplanting; preparation of tree removal application submissions with compensatory tree planting proposals; liaison with Government; tender documentation for tree transplanting contracts.

## **SELECTED COMPLETED PROJECTS : 2000 - 2010**



### **STUDY ON GREEN ROOF APPLICATION IN HONG KONG**

Client: Architectural Services Department, HKSAR Government

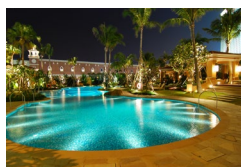
The study objective was to conduct a quick review of the latest concepts and technologies on green roofs and to recommend guidelines adapted to suit local applications in Hong Kong. It also aimed to promote public understanding and awareness of the benefits of green roofs. The study Final Report has become the local 'bible' on green roof application in Hong Kong. The study received an **UKLI Highly Commended Award**.



### **THE VENETIAN MACAU**

Client: Venetian Macau Limited

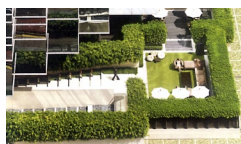
Detail landscape design services for resort casino complex with hotel, convention and exhibition facilities developed on the theme of 'Venice'. Landscape areas comprise feature lagoon with terraces and promenade; swimming pool complex with leisure, spa and private function pools; podium landscape area with mini-golf course and V.I.P. gardens; and perimeter landscape and streetscape. Design collaboration with concept designer Lifescapes International.



### **FOUR SEASONS HOTEL, MACAU**

Client: Venetian Macau Limited

Detail landscape design services for 6-star hotel located adjacent to The Venetian Macau. Landscape areas comprise large swimming pool deck with 4 swimming pools, 2 spas, grotto feature, cabanas, & ornamental water features; Grand Entrance with porte cochere and water feature; podium landscape area with another pool deck and spa; Paiza Mansion courtyard garden; & several small terraced gardens. Design collaboration with concept designer Lifescapes international.



### **THE UPPER HOUSE, PACIFIC PLACE, ADMIRALTY, HONG KONG**

Client: Swire Properties Limited

Full soft landscape design services for the construction of an exclusive boutique hotel at Pacific Place designed by Andre Fu. Facilities include a series of outdoor landscape 'rooms' framed by clipped trees and tall hedges. Services include advance plant procurement of specially prepared trees and hedges.



### **SKYCITY NINE EAGLES GOLF COURSE, HONG KONG INTERNATIONAL AIRPORT**

Client: Airport Management Services Limited

Full masterplanning, golf course design and landscape design services for a 9-hole executive Par 3 Golf Course at Hong Kong International Airport, containing seven par 3's and two par 4's. Innovative design of overall masterplan layout and detailed golf course design so as to satisfy stringent environmental requirements necessary to obtain an Environmental Permit. Services also include tree survey and tree removal application and leading whole development consultant team.



### **HONG KONG WETLAND PARK, TIN SHUI WAI, HONG KONG**

Client: Architectural Services Department, HKSAR Government

Full landscape design services for the construction of a 64ha wetland park designed to provide a strategic tourism and educational facility for Hong Kong. One of Hong Kong's Millennium projects. Multi-award winning project receiving awards from **UKLI, HKILA, HKIA, ULI (World), ULI (Asia)** and **The Waterfront Center, USA**.

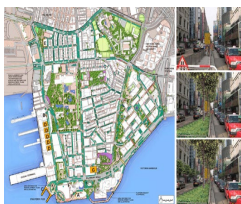


### **LANDSCAPE VALUE MAPPING OF HONG KONG**

Client: Planning Department, HKSAR Government

URBIS led an international team from Hong Kong, the UK and New Zealand, which included landscape architects, urban planners, experts in GIS, historic and cultural resources and ecologists. The 2-year Study output included a Landscape Character Map and Landscape Value Map of Hong Kong and a landscape change indicator for use in the Government's SUSDEV21 sustainable development modelling system. The study received an **HKILA Silver Medal**.





### **HQS 1/2004 - DEVELOPMENT OF GREENING MASTER PLAN FOR TSIM SHA TSUI, HONG KONG**

Client: Civil Engineering and Development Department, HKSAR Government

Development of Greening Master Plan for Tsim Sha Tsui to define the overall greening framework for the city district, including but not limited to establishing planting themes and identifying the extent and locations suitable for greening. The final Greening Master Plan is a reference guide to all bodies involved in the implementation of greening work in Tsim Sha Tsui, with a view to achieving an effective overall greening effect with local characteristics. The study received an **HKILA Award of Merit** and **UKLI Highly Commended Award**.



### **DISNEYLAND RESORT LINE, LANTAU ISLAND, HONG KONG**

Client: MTR Corporation Limited

Full landscape design services for a new 4km railway line connecting new Yam O Station on the Tung Chung Line, to new Disney Station at Hong Kong Disneyland. Includes Victorian style design for Disney Station with extensive planting of palms and exotic plants evoking a Victorian plant conservatory; and extensive planting along the railway tracks adjacent to Inspiration Lake. The design received an **HKILA Award of Merit**.



### **HMW 1/2005(EP) - STUDY FOR GREENING AND AESTHETIC DESIGN OF NOISE BARRIERS**

Client: Highways Department, HKSAR Government

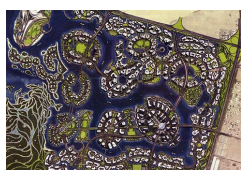
This study investigates the greening and aesthetic design of noise barriers (vertical, cantilevered, partially enclosed and fully enclosed noise barrier structures) to alleviate their adverse visual impacts, taking account of local and overseas experience. The objective is to provide Highways Department with good principles and examples of greening proposals and aesthetic designs, which can be used as reference for the design of noise barriers in future.



### **WEST RAIL DD400 SHAM SHUI PO SECTION, HONG KONG**

Client: MTR Corporation Limited

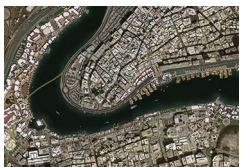
Full landscape design services for the construction of 3km of underground railway through the urban area, including 2 stations at Mei Foo and Yen Chow Street. The landscape works include a roof-top park on top of Mei Foo Station, and re-provision of Lai Chi Kok Park and Nam Cheong Buffer Zone. The design for Mei Foo Station received a **British Construction Industry Awards - International Award**.



### **THE LAGOONS, DUBAI**

Client: Sama Dubai LLC

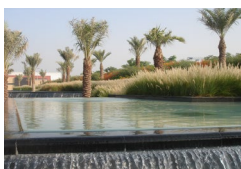
Full landscape design service for all public landscape areas within a new urban area along the Dubai Creek. The total landscape area is approximately 250 ha and encompasses a huge range of different landscape types including waterfront promenades, large public parks, urban streetscapes, commercial and residential landscape, and wetland landscapes located adjacent to the neighbouring Ras Al Khor Wildlife Sanctuary. Project put on hold in 2008.



### **CREEKFRONT DEVELOPMENT, DUBAI**

Client: Sama Dubai LLC

Full landscape design service for all public and private landscape areas within a new development along the Dubai Creek. The project includes waterfront promenades, public parks, urban streetscapes, museums, hotels, retail and commercial landscape. The project vision is to emphasise the Creek as a main element of the city and in so doing, revitalise and rejuvenate an area of historical importance that has potential to become the 'heart and soul' of Dubai. The project develops the local vernacular architectural vocabulary to produce an integrated historical, residential, commercial and recreational hub in the heart of the city, that creates a unique sense of place, and which features the Creek itself as a major focal element. Project put on hold in 2008.



### **SALES OFFICE AREA, THE LAGOONS, DUBAI**

Client: Sama Dubai LLC

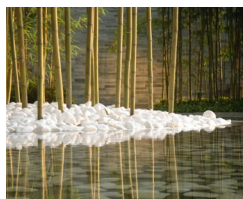
Full landscape design service for all public landscape areas within a new urban area along the Dubai Creek. The total landscape area is approximately 250 ha and encompasses a huge range of different landscape types including waterfront promenades, large public parks, urban streetscapes, commercial and residential landscape, and wetland landscapes located adjacent to the neighbouring Ras Al Khor Wildlife Sanctuary. Sales Office Area completed in 2008.



### **RENOVATION OF DISCOVERY BAY PLAZA, LANTAU ISLAND, HONG KONG**

Client: Hong Kong Resort Company Limited

Full landscape design services for the redevelopment and refurbishment of Discovery Bay Plaza, including creation of new terraced decking for alfresco dining facing the main bay; creation of new public promenade overlooking the bay; renovation of the main public plaza including new paving, seating, water features; and creation of new outdoor cafeteria area with kiosk and alfresco dining.



### NOVOTEL CITIGATE, TUNG CHUNG, LANTAU ISLAND, HONG KONG

Client: Newfoundworld Limited

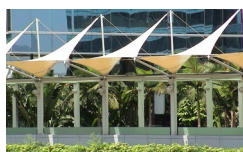
Full landscape design services for this 3-4 Star Hotel which forms final part of the Citygate commercial development near Hong Kong International Airport. Landscape areas include the hotel forecourt, which contains water reflecting pools, cascades, and extensive bamboo theme planting; a swimming pool deck containing al fresco dining areas and 'break-out' areas for executive meetings; and a terraced landscape deck containing a marble sculptural water source "Transformatter" by artist Polo, and a large stone water cascade linking with the pool deck.



### VIA FIORI, TAI KOO FONG, HONG KONG

Client: Swire Properties Limited

Full landscape design services for open space corridor linking new office developments in Tai Koo Fong, Quarry Bay with existing residential and commercial centre in Tai Koo Shing. Facilities include a temporary mini-golf facility and a large timber gateway feature.



### HSBC HEADQUARTERS, OLYMPIC CITY, TAI KOK TSUI, HONG KONG

Client: Sino Realty

Full landscape design services for construction of new commercial office tower in West Kowloon. Landscape areas include streetscape and a public open space at podium deck level with pedestrian bridge linking to adjacent MTR station.



### HKR 1/2002 - REVIEW ON INTERIM PERFORMANCE OF VARIOUS PROPRIETARY SOFT LANDSCAPE TREATMENT UNDER TRIAL ON HYD SLOPES

Client: Highways Department, HKSAR Government

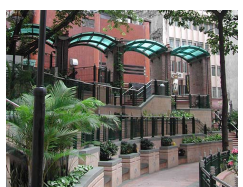
Nine-month research study into the latest 'state-of-the-art' treatments for the greening of slopes techniques throughout the world; field surveys of 167 existing trial slope treatments in Hong Kong; evaluation of the success rates of different techniques according to a prescribed set of criteria; and recommendations for future trials.



### CE 42/2000 SOUTH EAST KOWLOON DEVELOPMENT, HONG KONG

Client: Territory Development Department, HKSAR Government

Landscape design for new "World-Class Cityscape" development on site of former Kai Tak Airport. Preparation of Landscape Design Manual, ACABAS Submissions, Tree Surveys and Felling Applications, LVIA under EIAO and development of detail landscape designs for all new roads and associated 'landbridges', flyovers, footbridges, subways and roadside pedestrian areas within NAKTA district.

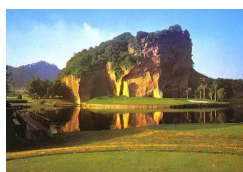


### ENHANCEMENT OF EXISTING TOURIST ATTRACTIONS IN CENTRAL & WESTERN, HONG KONG

Client: Architectural Services Department, HKSAR Government

Streetscape improvement works to historic parts of Central and Western to enhance the historic character, improve signage, and provide pedestrian facilities with a view to promoting tourism. Works include design of new Lok Hing lane sitting out area.

## SELECTED COMPLETED PROJECTS : PRE 2000



### LOTUS HILL GOLF RESORT, PANYU, PRC

Client: Donson International Development Limited

Full masterplanning, golf course design and landscape design services for an 18-hole resort golf course with driving range, 3 practice holes, clubhouse, 500 houses and community centre, situated in a riverside floodplain adjacent to a National Park and Tourism Centre. Golf course design endorsed by **Bernhard Langer**, twice winner of the US Masters, and former No. 1 in World Rankings. The design received an **HKILA Silver Medal** & numerous other awards.



### KOWLOON PARK DRIVE, TSIM SHA TSUI, KOWLOON, HONG KONG

Client: Highways Department, HKSAR Government

Full landscape design services for construction of new urban road and flyover including hard landscape detailing of flyover abutments, stainless steel cladding to flyover in an important tourist area. The design received an **HKILA Award of Merit**.



### DISCOVERY BAY GOLF COURSE EXTENSION, LANTAU ISLAND, HONG KONG

Client: Hong Kong Resort Company Limited

Full masterplanning, golf course design and landscape design services for a 9-hole extension to an existing 18-hole championship golf course. The design received an **HKILA Award of Merit**.





#### **TAI WO PARK, TAI PO, HONG KONG**

Client: Territory Development Department, HK Government

Full landscape design services for construction of a new public open space in Tai Po. Features include a terraced palm garden, bamboo garden, sundial garden, basketball court, children's play areas and office and toilet block. The design received an **HKILA Award of Merit**.



#### **LAM TSUEN RIVER TRAINING, TAI PO, HONG KONG**

Client: Territory Development Department, HK Government

Full landscape design services for the construction of a river training project in Tai Po, incorporating grasscrete treatments to the trapezoidal river channel sides and floor and extensive landscape treatments to the riverside areas including pedestrian walkways and sitting areas. The design received an **HKILA Award of Merit**.



#### **PRIVATE RESIDENCE, JARDINES LOOKOUT, HONG KONG**

Client: Private Client

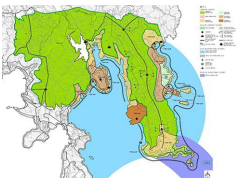
Full landscape design services for the construction of a new private residence with garden. Garden features include a swimming pool deck with lush tropical planting and lawn above the garage and a back garden courtyard with water feature.



#### **PRIVATE RESIDENCE, SHEK O, HONG KONG**

Client: Private Client

Full landscape design services for the construction of a new private residence with extensive garden in a beautiful natural setting. Garden features include an infinity edge swimming pool and pool deck with stunning views, tennis court, lawn area with sculpture, bamboos and bonsai plants in contemporary Japanese garden style.



#### **DEVELOPMENT STUDY FOR HONG KONG ISLAND SOUTH AND LAMMA ISLAND**

Client: Planning Department, HK Government

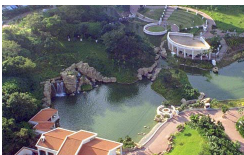
Landscape planning and landscape design input to major Government study on the development Hong Kong Island South and Lamma up to 2016, including landscape and visual impact assessment of development scenarios and preparation of 1:500 scale landscape, masterplans for preferred development scenarios.



#### **TAK WAH STREET PARK, TSUEN WAN, HONG KONG**

Client: Architectural Services Department, HKSAR Government

Chinese Garden with traditional, pavilions, moon gates, water features and boundary wall designed in Qing Dynasty style. The design received an **HKILA Award of Merit**.



#### **TSING YI PARK, TSING YI, HONG KONG**

Client: Regional Council, HK Government

Major new open space with active and passive recreation facilities. Includes three large ornamental lakes with connecting cascades and waterfalls; lookout pavilions; restaurant and ornamental gardens. Also includes children's play areas, tennis courts and a soccer pitch.



#### **TUNG CHUNG STATION COMMERCIAL & RESIDENTIAL DEVELOPMENT, LANTAU ISLAND, HONG KONG**

Client: Newfoundworld Limited

Landscape design for Residential, Commercial/Retail development and Marriott Hotel. Project included extensive public and private open spaces areas. Public open spaces are designed to encourage interaction between the pedestrians and surrounding commercial uses (cafeterias, brasseries etc.) and include a large interactive fountain with water jets in paving.



#### **CITYBANK PLAZA GARDEN ROAD, CENTRAL, HONG KONG**

Client: Great Eagle Project Management Ltd.

Scheme design and soft landscape planting works for new office building in Central. The design received an **HKIA Silver Medal Award**.